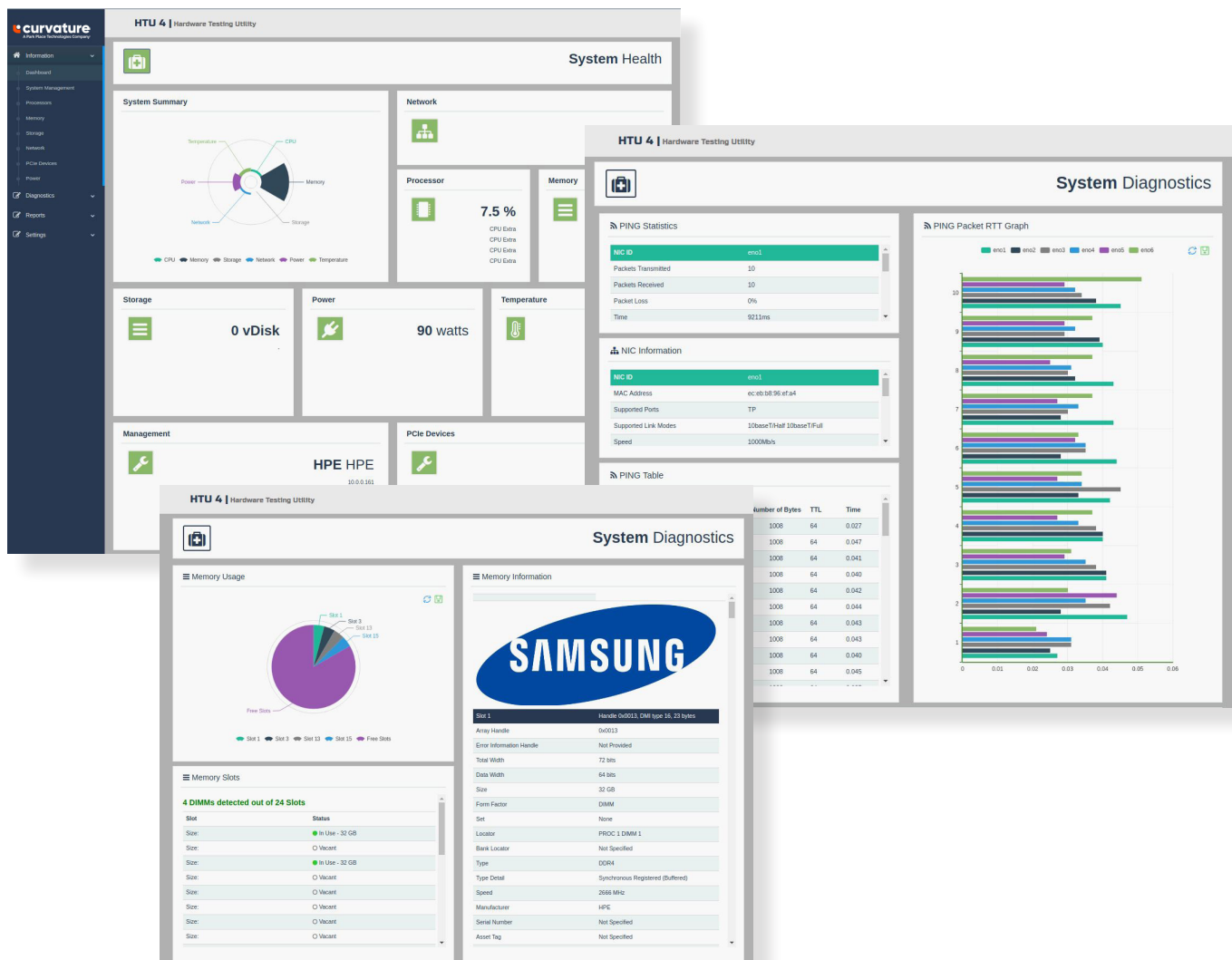


Overview

Curvature's Testing Environment, otherwise known as **CTE**, is a bootable Linux based operating system. CTE has been developed in-house as an enterprise grade **x86 Hardware Diagnostic Tool**. Used outside of the production software, CTE provides a safe environment to collect objective and accurate insight into the status of x86 server hardware. Every aspect of the hardware is documented from firmware levels to temperatures and system voltages.

Hardware Testing Utility, otherwise known as **HTU**, is the proprietary portion of the tool-stack. HTU is a simple menu based system that will profile a server and execute stress test accordingly. Upon completion, HTU will generate a report in a few different formats, containing all the test results and pertinent hardware information. The test results are formatted for readability and are organized neatly to be presentable.

Most manufacturers offer a diagnostic tool but they are designed to be used individually, in a one-off / disaster-recovery basis. Manufacturer diagnostic tools do not natively support remote operation or automation. Everything must be done manually and locally. This limitation led to the development of **CTE & HTU**, a tool-stack that can be deployed across a network, universally compatible with all x86 server platforms.



Curvature Testing Environment (CTE)

Efficiency

CTE is bootable via the network making it scalable, allowing Curvature to test a large volume of devices at once. With CTE, our only limiting factor in the number of devices we are able to test at once, is power.

Field Replacement Unit IDs (FRUs)

If a server should fail, having the proper FRU minimizes downtime. CTE generates all of your stored information to get you up and running as quickly as possible.

Our Differentiators

More than any other manufacturer diagnostic tool, CTE looks at several points of performance to get an overall health status, rather than just awarding a pass / fail result.

- Lifetime hours
- Network throughput
- Voltage levels
- Temperature levels

Core Tests

- CPUs
- RAM
- Network Interface Cards
- Hard Drives
- Fans
- Temperature
- Voltage Levels
- Raid Controllers
- PCIe Cards
- Remote Management / IPMI (Intelligent Platform Management Interface)

Data Erasure

CTE offers advanced data erasure capabilities, ensuring complete data destruction that meets the rigorous NIST 800-88 standards. This guarantees that all sensitive information is securely wiped, protecting your organization from data breaches and ensuring compliance with industry best practices.

Compatibility



Quality Systems Certifications

- **ISO 9001 certification** for all of our distribution centers places us among an elite class of equipment providers that have achieved this level of quality control.
- **ISO 27001 certification** for information security management systems. One of the most widely recognized and prestigious security standards available.
- **R2v3 certification** ensuring that all data is securely wiped and disposed of in compliance with the highest industry standards. This certification demonstrates our commitment to data security and environmental responsibility.

